

MONTHLY MEMBERSHIP PROGRESS REPORT

LOCATION PAKISTAN

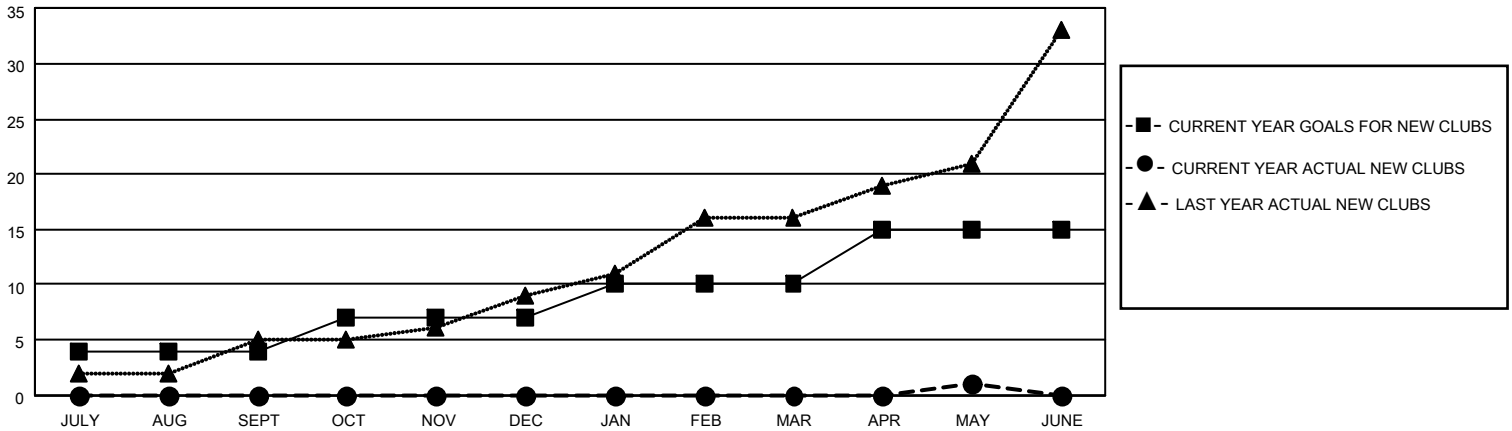
District 305 N2

Results as of: 5/31/2023

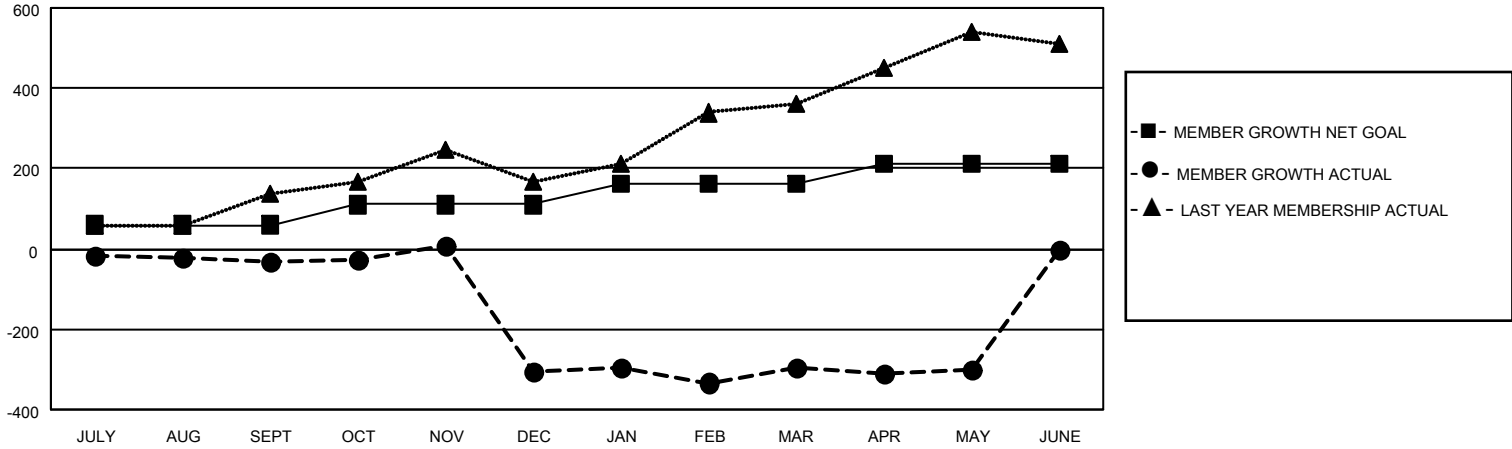
Clubs			
RESULTS FOR 2022-2023			
QUARTER	NEW CLUB GOAL	NEW CLUBS	DROPPED CLUBS
JULY/AUG/SEPT	4	0	1
OCT/NOV/DEC	3	0	7
JAN/FEB/MAR	3	0	3
APR/MAY/JUNE	5	1	0

Members			
RESULTS FOR 2022-2023			
QUARTER	MEMBER GROWTH NET GOAL	MEMBER GROWTH ACTUAL	DROPPED MEMBERS ACTUAL (including transfers)
JULY/AUG/SEPT	60	43	73
OCT/NOV/DEC	50	132	376
JAN/FEB/MAR	50	113	71
APR/MAY/JUNE	50	47	50

GOALS AND ACTUAL NEW CLUBS CUMULATIVE



GOALS AND ACTUAL MEMBERS CUMULATIVE



DROPPED CLUBS: 11	
DROPPED MEMBERS	
DECEASED	1
CLUB CANCELLED	221
OTHER	348
TOTAL	570

65 CLUBS OF 152 ADDED 1 OR MORE NEW MEMBERS

[CLICK HERE FOR CUMULATIVE MEMBERSHIP DATA](#)

<u>GENDER DISTRIBUTION</u>	
MALE	2,701 (75.01%)
FEMALE	900 (24.99%)
NON BINARY	0 (0.00%)
PREFER NOT TO ANSWER	0 (0.00%)
TOTAL FAMILY UNIT MEMBERS	3,320
FAMILY MEMBERS PAYING HALF DUES	2,566